



Wilflex™ Texture Inks are a collection of special effect bases that when printed and cured on a garment create unique surface textures. Use the bases alone, in combination, or mix in additives such as pigments concentrates (PC), Equalizers, Glitters, Shimmers, glow in the dark inks and more to create your own custom prints. Don't compete with the printer down the street! Produce one of a kind graphics and textures with Wilflex Texture Inks.



Soft Textures

10700PB Plush Base

10700PFXPB Plush Base

Specially formulated ink to create soft fashion textures that simulate chenille, velvet, flock, suede and others.

10425NS Natural Suede Base

10425PFXNS Natural Suede Base

Natural Suede will produce suede/velvet finishes or can be colored to create leather and felt effects - tough and washable.

10340FSB Fashion Soft Base

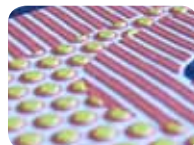
10340PFXSB Fashion Soft Base

A low viscosity plastisol base formulated to create super soft finish that simulates water-base inks and discharge. Effective for printing over seams.

10399NB Nova Base

10399PFXNB Nova Base

When mixed with glitter flakes, Nova Base penetrates the fabric, leaving the flake exposed and dry. Print over an ink underlay to produce gloss embossed effects.



Medium Textures

18000CB Cork Base

18000PFXCB Cork Base

Designed to create an elevated cork texture that is smooth to the touch but extremely durable and stretchable. The base can produce high or low elevated textured surfaces.

10950FB Frost Base

10950PFXFB Frost Base

Frost-like, special effect finishes will create a multiple range of unique and subtle images and textures. Frost Ink can be used on its own or with PC or Equalizers.

10009PFXCLR High Density Clear 2

HDC can be used as a high density gloss/clear or as a high gloss overprint to any ink. Add PCs to create glossy colors.

10088PFXHDC HD Sharp Clear

HD Sharp Clear has been developed to create high resolution graphics with sharp detail. Use HD Sharp Clear in high density applications or blend with other texture inks to create unique effects.



Hard Textures

10650SCP Sculpture Base

10650PFXSCP Sculpture Base

Create high density, stacked effects. The finish of the ink is smooth and creates the effect of sculptured clay. Add Equalizers, PCs or MX to make colors.

10670RB Rock Base

10670PFXRB Rock Base

Rock Base will create a tough and durable, rock hard ink surface. To create innovative textured surfaces, blend with other textured inks, PCs or metallics. Excellent foil adhesive.

10460PFXBB Brittle Base

11000PFXBB Brittle White

10000PFXBB Brittle Clear

Brittle Inks have the ability to easily fracture and crack when pressure is applied to the inks surface, exposing a worn, tough finish that resemble caked paint.

Reflective and Glow

- ▶ 99900PFX Phosphorescent
- ▶ 99950PFX Cosmic Glo
- ▶ 99951PFX Intense Cosmic Glo
- ▶ 10344REF Imagebrite Reflective Base
- ▶ 19000PFXREF Imagebrite Black Ref

Metallics and Shimmers

- ▶ 10988LS Liquid Silver
- ▶ 10989LG Liquid Gold
- ▶ 89010MCVFF Gold Glitter
- ▶ 15300MCVFF Silver Glitter
- ▶ 85370MCVFF Gold Shimmer
- ▶ 15370MCVFF Silver Shimmer
- ▶ 85570MCVFF Ultra Gold Shimmer
- ▶ 15340IS Yellow Sparkle
- ▶ 15005IS Crystallina
- ▶ 10010PFXMB Metallic Base

Others Specialties

- ▶ 10900FB Fashion Pearl Base
- ▶ 10910FB Fashion Gold Base
- ▶ 10280PFXFB Flock Adhesive Base
- ▶ 10008PFX Special Effects Clear
- ▶ 11110PFXCLR HD Clear
- ▶ 1012PFXSB Particle Base

USA
PolyOne
8155 Cobb Center Drive
Kennesaw, GA 30152
Tel: 770.590.3500
Tel: 800.326.0226
Fax: 678.290.2749

England
PolyOne Corp. UK Ltd.
Everite Road
Widnes Cheshire, WA8 8PT
United Kingdom
Tel: +44 (0)151 495 4442
Fax: +44 (0)151 495 4443

China
PolyOne China
No. 1, QiHang Industrial Park
Haoxiang Road, Shajing Town
Baoan District, Shenzhen 518104
Guangdong, China
Tel: +86 755 2969 2888
Fax: +86 755 2969 2999

Turkey
PolyOne Turkey
İkitelli Organize Sanayi Bölgesi
Turgut Özal Cad. No:103
Küçükçekmece, İstanbul, Turkey
Tel: +90 (212) 549 22 56
Fax: +90 (212) 549 22 41

www.wilflex.com/pib to access all Wilflex™ Product Information Bulletins

wilflex.com
email: techserviceswilflex@polyone.com

Product Literature :: Wilflex Texture Inks :: 07.2011

	Opacity	Bleed Resistance	Smooth Surface	Flash	Gloss	Printability	Cotton	Polyester	Specialty	Mesh	Capillary/Thick Film	Gel Temperature	Cure Temperature
Fashion Soft	3	1	9	9	1	9	✓	✓	some	230-305 (90-120cm)	N/A	220°F 104°C	320°F 160°C
Nova	N/A	N/A	4	8	2	7	✓	✓	✓	25 - 40 (10 - 15cm)	200-400+ micron	160-180°F 71-82°C	330-340°F 166-171°C
Plush	8	6	1	7	1	9	✓	✓	✓	86-305 340-120cm)	200-400 micron	220°F 104°C	335-350°F 155-270°C
Suede	8	3	6	7	N/A	9	✓			86-230 (34-90cm)	200-400 micron	185°F 85°C	320°F 170°C
Puff	9	N/A	N/A	5	N/A	8	✓			60-110 (24-43cm)	N/A	290-330°F 144-167°C	320°F 160°C
High Density Clear	N/A	N/A	8	7	9	7	✓		some	24-110 (10-43cm)	200-400 micron	220°F 104°C	350°F 177°C
Cork	9	3	N/A	8	N/A	8	✓		some	60-230 (24-90cm)	up to 400 micron	220°F 104°C	330-350°F 160-177°C
Brittle	N/A	2	6	9	4	9	✓	+/-	some	86-230 (34-90cm)	up to 200 micron	220°F 104°C	340-350°F 171-177°C
Rock	5	N/A	4	4	8	7	✓		some	86-230 (34-90cm)	200-400 micron	220°F 104°C	350°F 170°C
Sculpture	9	N/A	7	7	N/A	7	✓			86-230 (34-90cm)	200-400 micron	220°F 104°C	325-350°F 162-177°C
			Soft Textures			Medium Textures			Hard Textures				

	Opacity	Bleed Resistance	Smooth Surface	Flash	Gloss	Printability	Cotton	Specialty	Mesh	Capillary/Thick Film	Gel Temperature	Cure Temperature	
Liquid Silver	9	2	9	7	8	9	✓	some	86-230 (34-90cm)	up to 400 micron	220°F 104°C	350°F 176°C	
Liquid Gold	9	2	9	7	8	9	✓	some	86-230 (34-90cm)	up to 400 micron	220°F 104°C	320-350°F 160-176°C	
Silver Glitter	9	N/A	2	4	9	6	✓	some	25-40 (10-15cm)	50-70 micron	220°F 104°C	320°F 160°C	
Gold Glitter	9	N/A	2	4	9	6	✓	some	25-40 (10-15cm)	50-70 micron	220°F 104°C	320°F 160°C	
Silver Shimmer	9	N/A	7	7	9	8	✓	some	86-110 (34-43cm)	200-600 micron	220°F 104°C	350°F 177°C	
Gold Shimmer	9	N/A	7	7	9	8	✓	some	86-110 (34-43cm)	200-600 micron	220°F 104°C	350°F 177°C	
Ultra Gold Shimmer	9	N/A	7	7	9	8	✓	some	86-110 (34-43cm)	200-600 micron	220°F 104°C	350°F 177°C	
Yellow Sparkle	5	N/A	4	2	9	7	✓	some	25-60 (9-24cm)	N/A	170°F 76°C	320°F 160°C	
Metallic Base	N/A	N/A	4	8	2	7	✓	some	74-110 (29-43cm)	200-400+ micron	160-180°F 71-82°C	330-340°F 166-171°C	
Particle Base	N/A	N/A	8	8	7	7	✓	some	25-40 (10-15cm)	200-400+ micron	160-180°F 71-82°C	330-340°F 166-171°C	
Phosphorescent	N/A	N/A	8	9	4	8	✓	some	60-140 (24-55cm)	200-400 micron	220°F 104°C	325-350°F 160-177°C	
Kosmic Glo	N/A	N/A	8	9	4	8	✓	some	60-140 (24-55cm)	200-400 micron	220°F 104°C	325-350°F 160-177°C	
Intense Kosmic Glo	N/A	N/A	8	9	4	8	✓	some	60-140 (24-55cm)	200-400 micron	220°F 104°C	325-350°F 160-177°C	
ImageBrite Reflective	9	N/A	8	9	4	8	✓	some	110-156 (25-35cm)	N/A	160-180°F 70-82°C	340-350°F 171-177°C	
ImageBrite Black Reflective	9	N/A	8	9	4	8	✓	some	110-156 (25-35cm)	N/A	160-180°F 70-82°C	340-350°F 171-177°C	
						Metallics & Shimmers			Glo Inks				