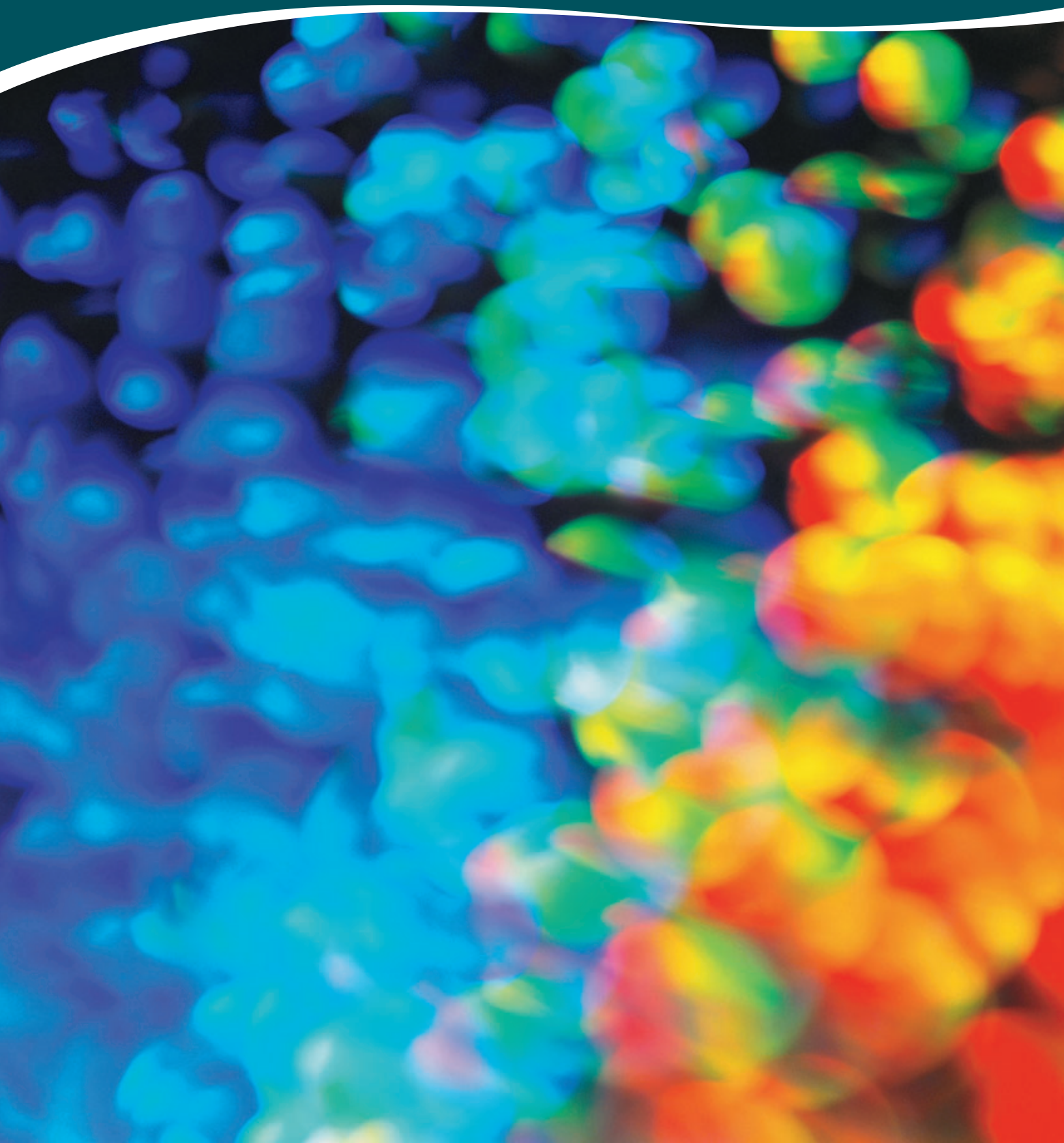




ONCOLOR™ COLORANTS CATALOG

---



# MULTIPLE APPLICATION CATALOG COLORANTS



AQUA, DK  
58031 DK AQUA CSPN  
CC10058031WE



AQUA, LT  
58030 LT AQUA CSPN  
CC10058030WE



AQUA, MED  
58032 MED AQUA CSPN  
CC10058032WE



AQUA, METALLIC  
58034 METALLIC AQUA CSPM  
CC10058034WE



AQUA, PEARLESCENT  
58035 PEARL AQUA CSPP  
CC10058035WE



BLUE, DK  
8012 DK BLUE CSPN  
CC10058012WE



BLUE, MED  
58013 MED BLUE CSPN  
CC10058013WE



BLUE, METALLIC  
58014 METALLIC BLUE CSPM  
CC10058014WE



BLUE, PEARLESCENT  
58015 PEARL BLUE CSPP  
CC10058015WE



BLUE, LT  
57995 LT BLUE CSPN  
CC10057995WE



BROWN, DK  
58783 DARK BROWN CSPN  
CC10058783WE



BROWN, LT  
58781 LIGHT BROWN CSPN  
CC10058781WE



BROWN, MED  
58784 MEDIUM BROWN CSPN  
CC10058784WE



BROWN, METALLIC  
58786 PEARL BROWN CSPP  
CC10058786WE



BROWN, PEARLESCENT  
58787 METALLIC BROWN CSPM  
CC10058787WE



GOLD, DK  
59143 DARK GOLD CSPM  
CC10059143WE



GOLD, LT  
59140 LIGHT GOLD CSPP  
CC10059140WE



GOLD, MED  
59141 MEDIUM GOLD CSPP  
CC10059141WE



GRAY, DK  
58046 DK GRAY CSPN  
CC10058046WE



GRAY, LT  
58045 LT GRAY CSPN  
CC10058045WE



GRAY, MED  
58047 MED GRAY CSPN  
CC10058047WE



GRAY, METALLIC  
58049 METALLIC GRAY CSPM  
CC10058049WE



GRAY, PEARLESCENT  
58048 PEARL GRAY CSPP  
CC10058048WE



GREEN, DK  
58022 DK GREEN CSPN  
CC10058022WE



GREEN, LT  
58021 LT GREEN CSPN  
CC10058021WE



GREEN, MED  
58023 MED GREEN CSPN  
CC10058023WE



GREEN, METALLIC  
58024 METALLIC GREEN CSPM  
CC10058024WE



GREEN, PEARLESCENT  
58025 PEARL GREEN CSPP  
CC10058025WE



ORANGE, DK  
58773 DARK ORANGE CSPN  
CC10058773WE



ORANGE, LT  
58772 LIGHT ORANGE CSPN  
CC10058772WE



ORANGE, MED  
58774 MEDIUM ORANGE  
CSPN  
CC10058774WE



ORANGE, METALLIC  
58775 METALLIC ORANGE  
CSPM  
CC10058775WE



ORANGE, PEARLESCENT  
58776 PEARL ORANGE CSPP  
CC10058776WE



PINK, DK  
59135 DARK PINK CSPN  
CC10059135WE



PINK, LT  
59134 LIGHT PINK CSPN  
CC10059134WE



PINK, MED  
59136 MEDIUM PINK CSPN  
CC10059136WE



PINK, METALLIC  
59137 METALLIC PINK CSPM  
CC10059137WE



PINK, PEARLESCENT  
59138 PEARL PINK CSPP  
CC10059138WE



RED, DK  
58305 DARK RED CSPN  
CC10058305WE



RED, LT  
58302 LIGHT RED CSPN  
CC10058302WE



RED, MED  
58306 MEDIUM RED CSPN  
CC10058306WE



RED, METALLIC  
58353 METALLIC RED CSPM  
CC10058353WE



RED, PEARLESCENT  
58354 PEARL RED CSPP  
CC10058354WE



SILVER, DK  
58051 DK SILVER CSPM  
CC10058051WE



SILVER, LT  
58050 LT SILVER CSPM  
CC10058050WE



SILVER, MED  
58052 MED SILVER CSPM  
CC10058052WE



VIOLET, DK  
58037 DK VIOLET CSPN  
CC10058037WE



VIOLET, LT  
58036 LT VIOLET CSPN  
CC10058036WE



VIOLET, MED  
58038 MED VIOLET CSPN  
CC10058038WE



VIOLET, METALLIC  
58039 METALLIC VIOLET CSPM  
CC10058039WE



VIOLET, PEARLESCENT  
58040 PEARL VIOLET CSPP  
CC10058040WE



YELLOW, DK  
58358 DARK YELLOW CSPN  
CC10058358WE



YELLOW, MED  
58359 MEDIUM YELLOW  
CSPN  
CC10058359WE



YELLOW, METALLIC  
58360 METALLIC YELLOW  
CSPM  
CC10058360WE



YELLOW, PEARLESCENT  
58361 PEARL YELLOW CSPP  
CC10058361WE



YELLOW, LT  
58357 LIGHT YELLOW CSPN  
CC10058357WE

# PET PACKAGING CATALOG COLORANTS



AQUA PEARL,  
PET APPLICATIONS  
LALELALELO GREEN  
CC10008229WE



AQUA PEARL,  
PET APPLICATIONS  
LICKETY SPLIT BLUE  
CC10010884WE



AQUA, PET APPLICATIONS  
60026 MED AQUA CSPN  
CC10060026WE



BLUE PEARL,  
PET APPLICATIONS  
DIVA PEARL  
CC10008220WE



BLUE PEARL,  
PET APPLICATIONS  
ELEMENT BLUE  
CC10008235WE



BLUE PEARL,  
PET APPLICATIONS  
TRANSLUCENT COOL BLUE  
CC10010875WE



BLUE PEARL,  
PET APPLICATIONS  
COSMIC BLUE  
CC10010878WE



BLUE PEARL,  
PET APPLICATIONS  
TIDAL WAVE BLUE  
CC10010879WE



BLUE PEARL,  
PET APPLICATIONS  
ELECTRIC BLUE  
CC10010885WE



BLUE PEARL,  
PET APPLICATIONS  
JET BLUE  
CC10010891WE



BLUE PEARL,  
PET APPLICATIONS  
LAPIS  
CC10010894WE



BLUE, PET APPLICATIONS  
61615 MED BLUE CSPN  
CC10061015WE



DK BLUE PEARL,  
PET APPLICATIONS  
PEACOCK  
CC10008223WE



LT BLUE,  
PET APPLICATIONS  
61014 LT BLUE CSPN  
CC10061014WE



TRANS BOTTLE BLUE,  
PET APPLICATIONS  
WATER BOTTLE BLUE  
CC10022043WE



TRANS ROYAL BLUE,  
PET APPLICATIONS  
TRANS ROYAL BLUE  
CC10061093WE



BROWN,  
PET APPLICATIONS  
10070031 BROWN  
CC00005999WE



GOLD METALLIC,  
PET APPLICATIONS  
GOLD  
CC10007526WE



GOLD, PET APPLICATIONS  
61027 GOLD CSPM  
CC10061027WE



GRAY, PET APPLICATIONS  
10053909 GREY  
CC00003904WE



GREEN PEARL,  
PET APPLICATIONS  
LET'S GO GREEN  
CC10008231WE



GREEN PEARL,  
PET APPLICATIONS  
FANDANGO GREEN  
CC10008232WE



GREEN PEARL,  
PET APPLICATIONS  
RACY GREEN  
CC10010877WE



GREEN PEARL,  
PET APPLICATIONS  
STERLING SAGE  
CC10010892WE



GREEN,  
PET APPLICATIONS  
GREEN 375C  
CC10042306WE



TRANS BOTTLE GREEN,  
PET APPLICATIONS  
SODA GREEN  
CC10022424WE



TRANS GLASS GREEN,  
PET APPLICATION  
GREEN GLASS  
CC10023705WE



ORANGE,  
PET APPLICATIONS  
ORANGE 151C  
CC10040362WE



PINK PEARL,  
PET APPLICATIONS  
PURE PINK  
CC10008221WE



PINK, PET APPLICATIONS  
60027 PINK CSPN  
CC10060027WE



TRANS PINK,  
PET APPLICATIONS  
TRANSPARENT PINK  
CC10031092WE



BURGUNDY PEARL,  
PET APPLICATIONS  
SHU SHU  
CC10007153WE



RED, PET APPLICATIONS  
RED PET  
CC10039475WE



SILVER METALLIC,  
PET APPLICATIONS  
SILVER  
CC10007370WE



SILVER,  
PET APPLICATIONS  
SILVER  
CC10049205WE



DK VIOLET PEARL,  
PET APPLICATIONS  
MERLOT  
CC10007147WE



DK VIOLET PEARL,  
PET APPLICATIONS  
RAVEN  
CC10007155WE



TRANS VIOLET,  
PET APPLICATIONS  
PURPLE 267C  
CC10040807WE



VIOLET PEARL,  
PET APPLICATIONS  
TIMBLEBERRY  
CC10007148WE



VIOLET PEARL,  
PET APPLICATIONS  
VIOLET REACTION  
CC10010895WE



VIOLET,  
PET APPLICATIONS  
60541 VIOLET CSPN  
CC10060541WE



TRANS YELLOW,  
PET APPLICATIONS  
TRANSPARENT YELLOW  
CC10042135WE



YELLOW,  
PET APPLICATIONS  
YELLOW 116C  
CC10041043WE



## FILM CATALOG COLORANTS



BLUE, FILM GRADE  
1601 BLUE FILM  
CC0003828260



BROWN, FILM GRADE  
1462 BROWN FILM,  
CHOCOLATE  
CC0003827260



GRAY, FILM GRADE  
1809 GRAY FILM  
CC0003830660



GREEN, FILM GRADE  
1731 GREEN, FILM  
CC0003829660



ORANGE, FILM GRADE  
1327 ORANGE FILM  
CC0003826060



RED, FILM GRADE  
1495 RED FILM  
CC1000256560



YELLOW, FILM GRADE  
1229 YELLOW FILM  
CC0003824760

## WHITE AND BLACK CATALOG COLORANTS

PRODUCT DESCRIPTION	PRODUCT CODE	BASE RESIN TYPE	FDA	COMMENTS:
1017A BLUE WHITE PEC	CC0003822360	PE	Y	50% TiO <sub>2</sub> WHITE, BLUE TINT
1041 A/S WHITE PEC	CC0003823060	PE	Y	50% TiO <sub>2</sub> WHITE, ANTISTAT
15045 WHITE	CC0003827660	PE	Y	50% TiO <sub>2</sub> WHITE WITH FILLER
15055 WHITE	CC0003827960	PE	Y	50% TiO <sub>2</sub> WHITE
15077 WHITE	CC0003858060	PE	Y	70% TiO <sub>2</sub> WHITE
10004291 #12155 WHITE	CC00000226WE	ABS	Y	WHITE, ABS
10073010 WHITE	CC00006562WE	POM	Y	WHITE, ACETAL/POM
4AW416799MB WHITE	CC00015690WE	POLYAMIDE	N	WHITE, NYLON/POLYAMIDE
84724TMB CRYSTAL	CC00017567DR	POLYCARBONATE	Y	WHITE, POLYCARBONATE
WHITE	CC10030624WE	PET	Limited	WHITE, PET APPLICATIONS
PVC WHITE CONC	CC10032500WE	PVC	N	WHITE, RIGID PVC
2447 BLACK	CC0003838360	PE	N	50% BLACK, GENERAL PURPOSE UTILITY GRADE
3700 BLACK EVA CONCENTRATE	CC0003842860	EVA	N	50% BLACK
3751F	CC1001852260	EVA	Y	35% BLACK, FDA
3900 BLACK	CC0003843060	PP	N	40% BLACK, PP
5000 (5101) BLACK	CC0003846160	PS	N	35% BLACK, PS
5051F BLACK	CC0003848460	PS	Y	25% BLACK, PS FDA
5400 (5440) BLACK	CC0003847560	ABS	N	30% BLACK, ABS
3800 BLACK	CC1000364960	PE	N	50% BLACK, FILM GRADE
BLACK	CC10019640WE	POM	N	BLACK, ACETAL/POM
070BK61 BLACK	CC00016938DR	POLYAMIDE	N	BLACK, NYLON/POLYAMIDE
BLACK	CC10043049WE	POLYCARBONATE	N	BLACK, POLYCARBONATE
10096322 BLACK MB	CC00010529WE	PET	Limited	JET BLACK, PET APPLICATIONS
BLACK	CC10035059WE	PET	Limited	BLACK, PET

## SYNTHESIZED AND CUSTOM COLORANTS

Don't see the color you need? Check out our OnColor™ portfolio colorants. Using a database of more than 5 million synthesized color formulations, our color-matching experts can scientifically choose the best portfolio colorant for your specific polymer and end-use application. This virtual color technology (VCT) database allows us to select a color without physical color-matching, which means faster product selection, delivery and, ultimately, speed to market.

If you still can't find the exact color for your unique product or part, create a custom color. Our custom colorants feature a wide variety of special effects such as fluorescent, marble and frost as well as SmartBatch™ Concentrates, an integrated colorant solution combining color masterbatches and additives in one concentrate.

### Disclaimer

Colors are representative only and are not an exact color match of the listed product. PolyOne makes no claims as to the exactness of color hue and tint depicted in this brochure.

# HIGH-QUALITY STANDARD COLORANTS FOR THERMOPLASTIC APPLICATIONS

PolyOne's OnColor™ catalog colorants include more than 100 standard color masterbatches for a wide variety of end-use applications. Compatible with most resins, these superior colorants are available in black and white and shades of 12 primary colors including:

- ▶ Red
- ▶ Orange
- ▶ Yellow
- ▶ Green
- ▶ Aqua
- ▶ Blue
- ▶ Violet
- ▶ Pink
- ▶ Gray
- ▶ Brown
- ▶ Silver
- ▶ Gold

For a more distinctive appearance, customers can also select catalog colorants with pearlescent and metallic special effects.



## MEETING YOUR APPLICATION AND PROCESS NEEDS

OnColor catalog colorants are used in a wide variety of industrial and consumer markets and end-use applications, including:

- ▶ Packaging
- ▶ Automotive
- ▶ Custom molding
- ▶ Film and sheet
- ▶ Pipes and fittings
- ▶ Wire and cable
- ▶ Profile extrusion

To meet your exact process needs, OnColor catalog colorants can be used in injection molding, blow molding and profile extrusion processes and are available in forms such as:

- ▶ Pellet
- ▶ Flake
- ▶ Liquid
- ▶ Bead
- ▶ Powder

PolyOne OnColor catalog colorants are heavy-metal-free, and colorants manufactured with FDA-approved raw materials are available. Heavy-metal colorants can be supplied when needed.

## CONSISTENT COLORANTS AVAILABLE AROUND THE WORLD

With manufacturing facilities and sales offices throughout North America, Europe and Asia, our customers benefit from consistent color masterbatches regardless of location.

You'll find us in:

### North America

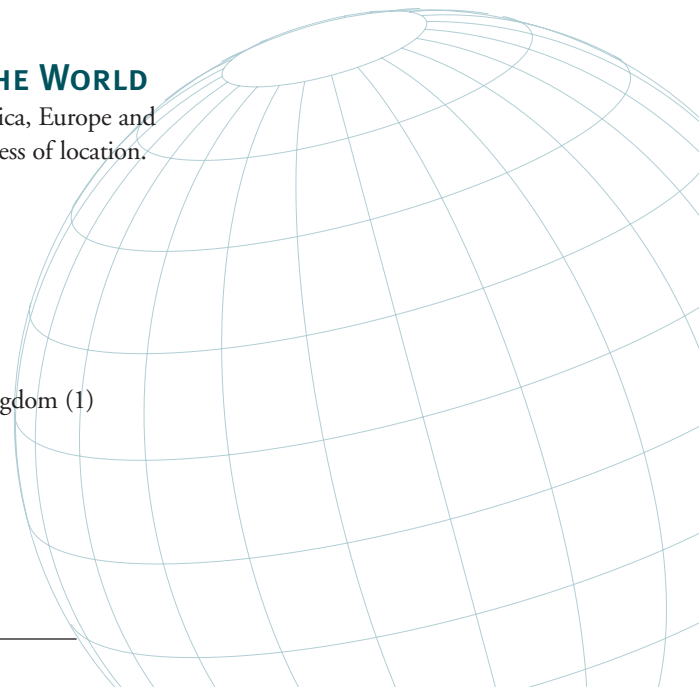
- Mexico (1 facility)
- United States (9)

### Asia

- China (2)
- Thailand (1)

### Europe

- Belgium (1)
- Czech Republic (1)
- Denmark (1)
- France (2)
- Germany (2)
- Hungary (1)
- Italy (1)
- Poland (1)
- Spain (1)
- Sweden (1)
- United Kingdom (1)



## CONTACT US

---

PolyOne is your one-stop source of colorants, color and additive systems, additive products, and color technology and support services.

For additional technical information such as specific applications, designed LDR and pricing, access our interactive online catalog at [www.polyone.com/oncolor](http://www.polyone.com/oncolor).

To place an order, please contact your sales representative or customer service agent or call customer service at 1-866-POLYONE (1.866.765.9663).

Based upon the results of testing using small-scale laboratory-type equipment, the foregoing information may not provide a reliable indication of performance or properties obtained or obtainable on larger-scale equipment. PolyOne makes no representations, guarantees or warranties of any kind respecting the accuracy of the foregoing information or the results obtained or obtainable through the use of the foregoing information. POLYONE MAKES NO WARRANTIES, EXPRESS OR IMPLIED, INCLUDING, BUT NOT LIMITED TO, IMPLIED WARRANTIES OF MERCHANTABILITY AND FITNESS FOR A PARTICULAR PURPOSE, either with respect to the foregoing information or PolyOne's products. The customer has all responsibility for testing and determining the suitability of PolyOne's products for use in customer's application. PolyOne Corporation shall have no liability for, and the customer assumes all risk and liability of, any use customer makes of the foregoing information and/or the products purchased from PolyOne. Nothing herein shall operate as permission, recommendation or inducement to practice any patented invention without permission of the patent owner.

PolyOne Corporation  
33587 Walker Road  
Avon Lake, OH 44012  
1.866.POLYONE  
(1.866.765.9663)  
[www.polyone.com](http://www.polyone.com)



At PolyOne, we deliver premium-quality products and services, which our customers use to enhance their own products. We believe no competitor can match our technical expertise because no workforce can outperform the people of PolyOne. Our people are ONE team working together – our strength and our pride. Their skills, passion and dedication are shaping a potent industry leader, a concerned corporate citizen and a great place to work.