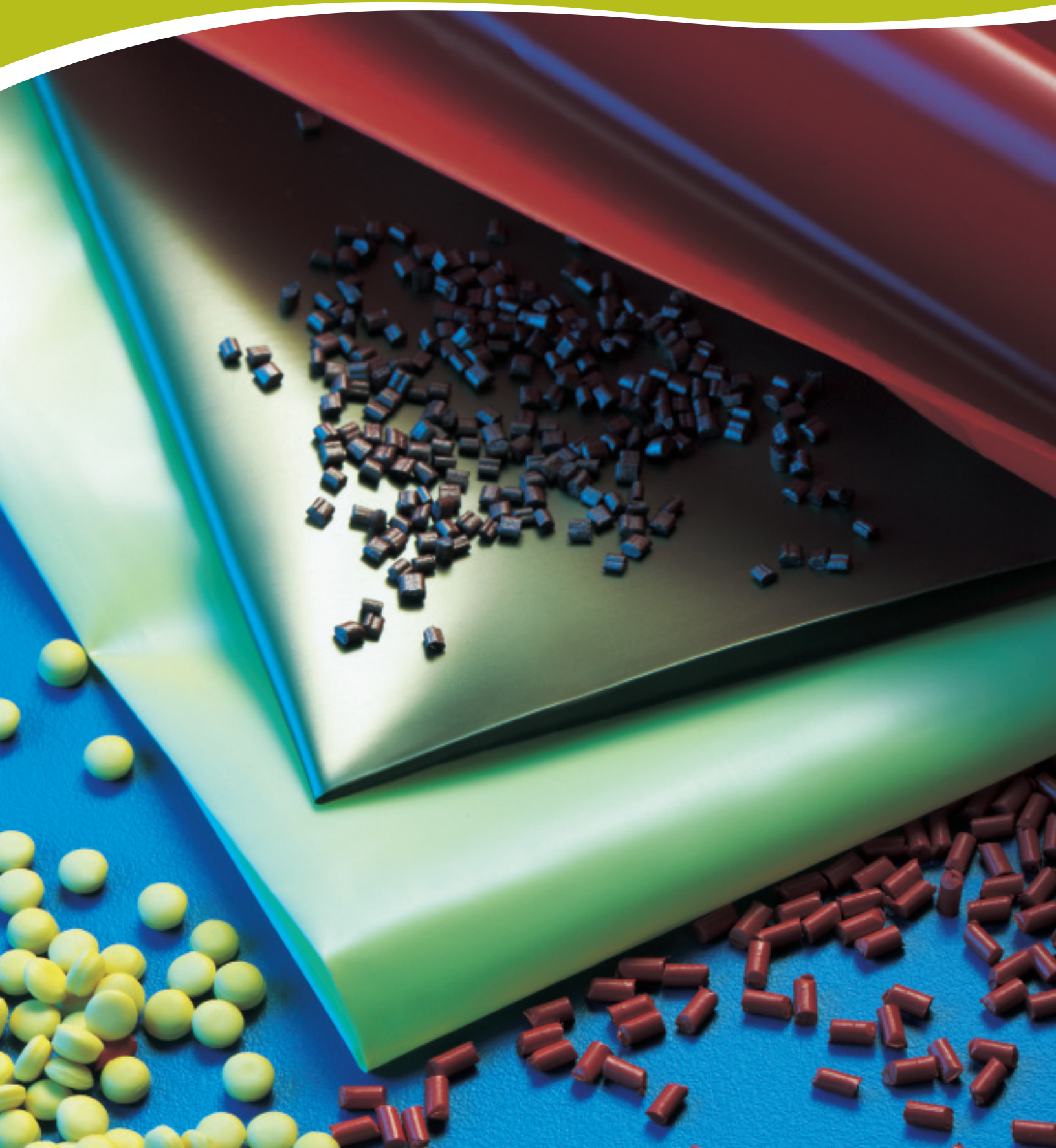


PolyOne[®]
We help people work wonders
with polymers!

POLYONE[®] COLOR CONCENTRATES FOR FILM

PRODUCT SELECTION GUIDE



POLYONE® COLOR CONCENTRATES FOR FILM

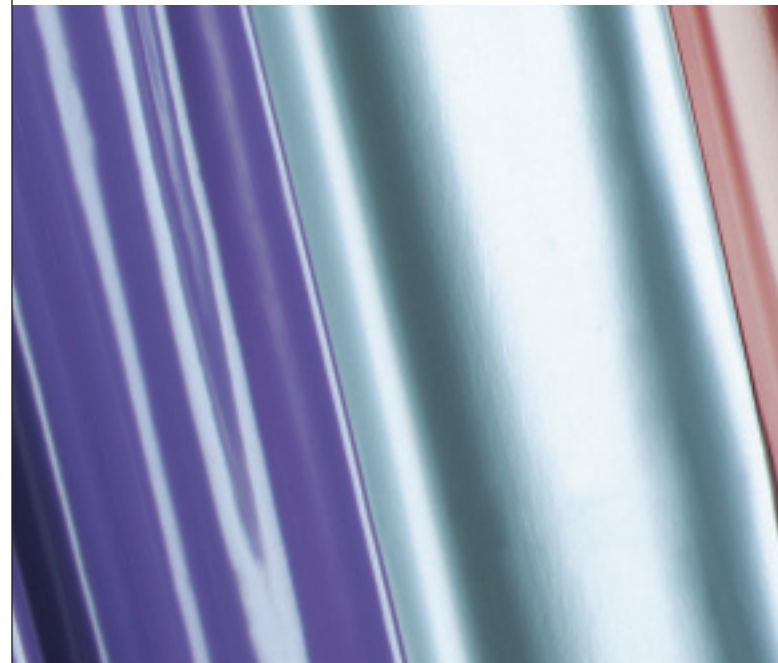
Color is customer choice. Delivering color is our contribution to that choice.

Whether you have a proprietary color, an industry standard color, or a customized color, PolyOne Color Concentrates for the film industry are designed to satisfy your customer color demands while enhancing your production operations.

Rely on PolyOne to meet your film color needs with...

- ▶ Standard colors in stock for polyolefin films
- ▶ Custom color-matching for your unique colors
- ▶ Special effect concentrates for unique appearance
- ▶ Heavy-metal concentrates when needed in your application
- ▶ FDA-acceptable concentrates
- ▶ Concentrates tailored to your processing temperature profile
- ▶ Multifunctional concentrates to enhance processing or product performance
- ▶ Concentrates for performance films using engineered resins like nylon and TPE

Take advantage of our full basket of PolyOne Color Concentrates.



PRODUCT NAME	ORDERING CODE	DESCRIPTION	CARRIER	NOMINAL CARRIER MFR	FDA*	COMMENTS
FILM COLOR CONCENTRATES - HEAVY METAL-FREE						
1606	CC0003828360	Blue	LLDPE	20	●	
1645	CC0003828860	Blue, Light	LD/LLDPE	15	●	
1675	CC1000753360	Blue, Dark	LLDPE	20	----	
1601	CC0003828260	Blue, Deep	LLDPE	20	●	
1626	CC1000752360	Blue, Medium	LD/LLDPE	15	●	
1672	CC0003829060	Blue, Metallic	LDPE	15	----	
1453	CC1000753260	Brown	LDPE	7	----	
1462	CC0003827260	Brown, Chocolate	LLDPE	20	----	
1457	CC0003827060	Brown, Dark	LDPE	7	----	
1201	CC0003824560	Buff	LD/LLDPE	14	----	
1805	CC0003830460	Gray, Dark	LDPE	7	----	
1809	CC0003830660	Gray, Light	LLDPE	20	----	
1792	CC0003830360	Green	LLDPE	20	●	Transparent
1750	CC1000344760	Green, Dark	LLDPE	50	----	
1731	CC0003829660	Green, Medium	LLDPE	20	----	
1740	CC0003829860	Green, Mint	LLDPE	20	●	
1204	CC1000698260	Kraft	LDPE	7	----	
1327	CC0003826060	Orange	LLDPE	20	----	420°F maximum processing temperature
1425	CC0003826660	Red, Hospital	LLDPE	11	----	
1835	CC0003830960	Silver, Dark	LDPE	15	----	
1229	CC0003824860	Yellow	LLDPE	11	----	420°F maximum processing temperature
FILM COLOR CONCENTRATES - HEAVY METAL						
1720	CC0003829260	Green, Medium	LDPE	7	----	
1316	CC0003825860	Orange	LDPE	10	----	
1446	CC0003826960	Red	LD/LLDPE	15	----	Yellow undertone
1420	CC0003826560	Red	LLDPE	20	----	Blue undertone
1227	CC0003824760	Yellow	LDPE	10	----	Red undertone

* The products denoted with a ● are composed of ingredients which meet the current requirements of the Food and Drug Administration (FDA) for food contact applications when used in accordance with the requirements and limitations as outlined in the Title 21 Code of Federal Regulation(s) (21 CFR) as identified for each product. As we cannot control the conditions under which the above products are used in your finished goods, we are not in a position to warrant that your products made from these materials also meet the applicable FDA regulatory requirements. Please conduct confirmatory testing.

Call 1.866.POLYONE for information on standard products.

PolyOne makes no representations, guarantees, or warranties of any kind with respect to the foregoing information with respect to accuracy, suitability for particular applications, or the results obtained or obtainable through the use of the information. While believed reliable, the foregoing information has its basis in laboratory work with small-scale equipment which may not provide a reliable indication of performance or properties obtained or obtainable on larger-scale equipment. Because of variations in methods, conditions, and equipment used commercially in processing these materials, PolyOne makes no warranties or guarantees respecting suitability of PolyOne's products or the information for the application or conditions disclosed. User has all responsibility for full-scale testing and end-product performance. PolyOne Corporation shall have no liability for, and the customer assumes all risk and liability of, any use of the foregoing information and/or use or handling of any material relating to the information. POLYONE MAKES NO WARRANTIES, EXPRESS OR IMPLIED, INCLUDING, BUT NOT LIMITED TO, IMPLIED WARRANTIES OF MERCHANTABILITY AND FITNESS FOR A PARTICULAR PURPOSE, either with respect to the information or materials relating thereto. Nothing herein shall operate as permission, recommendation, or inducement to practice any patented invention without permission of the patent owner.



That is our mission at PolyOne, and we fulfill it by delivering premium-quality products and services, which our customers use to enhance their own products. We believe no competitor can match our technical expertise because no workforce can outperform the people of PolyOne. Our people are ONE team working together – our strength and our pride. Their skills, passion, and dedication are shaping a potent industry leader, a concerned corporate citizen, and a great place to work.

NORTH AMERICA

PolyOne Corporation
PolyOne Center
Avon Lake, OH 44012
1.866.POLYONE (1.866.765.9663)
www.PolyOne.com

EUROPE

PolyOne Belgium SA
Rue Melville Wilson 2
5330 Assesse
Belgium
+32 (0) 83 660 271
info.color@polyone.com
www.PolyOne.com

ASIA

PolyOne Shanghai China
No. 88, GuoShouJing Rd.
Z.J. Hi-Tech Park
Pudong, Shanghai 201203
China
+86 (0) 21 5080 1188
shanghai@polyone.com.cn
www.PolyOne.com