



STAN-TONE™ EPX COLORS

- **Description:** Selected organic and inorganic pigments dispersed in epoxy resin.
- **Carrier:** Undiluted Bisphenol A, 185 epoxide equivalent.
- **Product Form:** Liquid to paste (varying viscosity).
- **Application/End Use:** For use in a variety of thermoset epoxy systems including adhesives, protective coatings, flooring, electrical potting, laminates and composites, etc.

Typical recommended use level: 1.0% – 5.0% by weight.

- **Standard Packaging:** 5-gallon plastic pail, 30-gallon fiber drum, 55-gallon steel drum.
- **Shelf Life:** Typically one year from the date of manufacture when stored under proper conditions in original, sealed container. Mix prior to use.
- **Order Size/Sample Size:** Minimum order: 5-gallon pail. 1/2-pint sample available upon request.



STAN-TONE CODE	PIGMENT TYPE	APPROX. % PIGMENT	SPECIFIC GRAVITY	COLOR INDEX	LIGHTFASTNESS
WHITE					
10EPX03	Titanium Dioxide, Rutile	60.0	1.95	PW-6	I/O
YELLOW					
12EPX01	Diarylide AAOT GS	25.0	1.22	PY-14	I
12EPX03	Diarylide HR RS	20.0	1.20	PY-83	I/O (Mass)
13EPX02	Isoindolinone RS	30.0	1.30	PY-110	I/O
13EPX03	Benzimidazolone GS	40.0	1.27	PY-151	I/O (Mass)
30EPX01 (a)	Primrose Chrome GS	60.0	2.21	PY-34	I/O C
30EPX03 (a)	Medium Chrome RS	60.0	2.21	PY-34	I/O C
81EPX01	Iron Oxide	40.0	1.62	PY-42	I/O
ORANGE					
15EPX01 (a)	Molybdate YS	70.0	2.57	PR-104	I/O C
15EPX03	Benzimidazolone	30.0	1.26	PO-36	I/O
RED					
23EPX04	Quinacridone BS	25.0	1.21	PV-19	I/O
23EPX06	Specialty Naphthol BS	30.0	1.21	PR-170	I/O (Mass) C
25EPX01	Red 2B, Ca Salt BS	24.0	1.27	PR-48:2	I/O (Mass)
28EPX01 (a)	Red 2B, Ba Salt YS	25.0	1.29	PR-48:1	I/O (Mass)
82EPX01	Iron Oxide, Light BS	40.0	1.67	PR-101	I/O
82EPX02	Iron Oxide, Dark VBS	40.0	1.68	PR-101	I/O
82EPX04	Iron Oxide, Light VYS	40.0	1.67	PR-101	I/O

EPX COLOR

Stan-Tone™ EPX colors consist of selected pigments dispersed in a Bisphenol A undiluted epoxy resin with an epoxide equivalent of 185. These colorants contain high pigment loading for optimum economics but can be diluted by the user if a lower viscosity is desired.

Stan-Tone™ EPX colorants are intended for use in a variety of thermoset epoxy systems. Some typical applications include protective coatings, adhesives, epoxy flooring, electrical potting, laminates and decorative jewelry.

Selection of the best pigment(s) to meet the requirements of a particular application is based on heat stability, lightfastness, weatherability, toxicity, etc. PolyOne's Technical Service Representatives can help you choose the most cost-effective pigment system for your specific needs. These colorants can be blended to achieve a wide range of color hues.

To assure optimum uniformity, it is recommended that the EPX colors are premixed into the epoxy resin prior to addition of the curative. The use level will vary depending on the end-use; typically 1%-2% for a thick casting and 5%-10% for a thin coating.

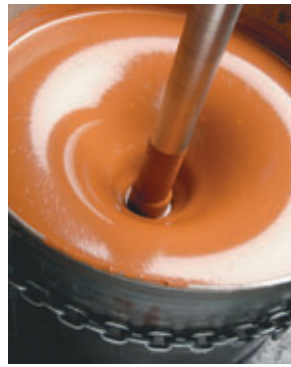
KEY

- RS = RED SHADE
- YS = YELLOW SHADE
- VYS = VERY YELLOW SHADE
- BS = BLUE SHADE
- VBS = VERY BLUE SHADE
- GS = GREEN SHADE
- HR = HEAT-RESISTANT
- (a) = HEAVY METAL PIGMENT

LIGHTFASTNESS

- I = INDOOR ONLY
- I/O = INDOOR OR OUTDOOR
- MASS = OUTDOOR MASSTONE APPLICATION ONLY
- C = SOME CAUTION ADVISED

STAN-TONE CODE	PIGMENT TYPE	APPROX. % PIGMENT	SPECIFIC GRAVITY	COLOR INDEX	LIGHTFASTNESS
BLUE					
40EPX03	Phthalocyanine GS	25.0	1.25	PB-15:3	I/O
40EPX05	Phthalocyanine RS	25.0	1.25	PB-15	I/O
42EPX02	Ultramarine	50.0	1.54	PB-29	I/O
49EPX01	Cobalt	50.0	1.83	PB-28	I/O
GREEN					
50EPX02	Phthalocyanine BS	18.0	1.34	PG-7	I/O
50EPX03	Phthalocyanine YS	25.0	1.42	PG-7	I/O
59EPX01 (a)	Chromium Oxide	40.0	1.64	PG-17	I/O
VIOLET/MAGENTA					
24EPX02	Carbazole Violet	15.0	1.30	PV-23	I/O
24EPX03	Quinacridone Violet	15.0	1.20	PV-19	I/O
24EPX04	Ultramarine Violet	50.0	1.66	PV-15	I/O
24EPX05	Quinacridone Magenta	20.0	1.21	PR-122	I/O
24EPX06	Benzimidazolone	20.0	1.20	PV-32	I/O
BROWN/TAN					
83EPX01	Iron Oxide, Light	39.0	1.64	PBr-6	I/O
83EPX02	Iron Oxide, Dark	40.0	1.66	PBr-6	I/O
BLACK					
90EPX01	Furnace – High Jet	15.0	1.23	PBk-7	I/O
90EPX04	Furnace – Medium	20.0	1.25	PBk-7	I/O
90EPX05	Iron Oxide	50.0	1.77	PBk-11	I/O



With respect to the foregoing information, PolyOne makes no representations, guarantees or warranties of any kind with respect to its accuracy, suitability for particular applications or the results obtained or obtainable through its use. PolyOne obtained the foregoing information generally based on laboratory work with small-scale equipment, which may not provide a reliable indication of performance or properties obtained or obtainable on larger-scale equipment. Because of variations in methods, conditions and equipment used commercially in processing these materials, PolyOne cannot warrant or guarantee the suitability of PolyOne's products or the information for a User's application or for the conditions disclosed in the foregoing information. User has all responsibility for full-scale testing and end-product performance. PolyOne shall have no liability for, and the customer assumes all risk and liability of, any use of the foregoing information and/or use or handling of any material relating to the foregoing information. POLYONE MAKES NO WARRANTIES, EXPRESS OR IMPLIED, INCLUDING, BUT NOT LIMITED TO, IMPLIED WARRANTIES OF MERCHANTABILITY AND FITNESS FOR A PARTICULAR PURPOSE, either with respect to the foregoing information or products relating thereto.

PolyOne Corporation
33587 Walker Road
Avon Lake, OH 44012
1.866.POLYONE
(1.866.765.9663)
www.polyone.com

Stan-Tone™ colorants are manufactured at PolyOne's state-of-the-art facility located in Massillon, Ohio. For more information, call 1-866-POLYONE or e-mail us via our Web site at www.polyone.com.



At PolyOne, we deliver premium-quality products and services, which our customers use to enhance their own products. We believe no competitor can match our technical expertise because no workforce can outperform the people of PolyOne. Our people are ONE team working together – our strength and our pride. Their skills, passion and dedication are shaping a potent industry leader, a concerned corporate citizen and a great place to work.

© 2005, PolyOne® Corporation
All Rights Reserved

STEPXB-01-70454