

1000PFXBB Epic Brittle Clear

Wilflex™ Epic Brittle Inks are specially formulated non-phthalate inks that have the ability to easily fracture and crack when pressure is applied to the ink surface. Distorting the surface through bending or stretching causes the ink to crack and fracture. Epic Brittle inks have a worn, tough finish that can resemble cracked paint or distressed appearance.

Highlights

- ▶ Tough and hard wearing.
- ▶ Can be used on light or dark grounds.
- ▶ Can be used in conjunction with Epic Fashion Soft inks.
- ▶ Will not dry in the screen.
- ▶ Prints easily through recommended meshes.

Printing Tips

- ▶ Can be mixed with Epic PCs and Epic EQs to create custom colors. Add up to 5% by weight.
- ▶ Use a single print stroke for lower mesh counts and a print-flash-print application when using higher mesh counts.
- ▶ Ink deposit is critical to achieving desired results.
- ▶ Cure at high temperatures of 340-350°F (170-175°C) to achieve cracking effect.

Compliance

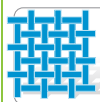
- ▶ Non-phthalate.
- ▶ For individual compliance certifications, please visit www.wilflex.com/compliance.

Precautions

- ▶ Perform fusion tests before production. Failure to cure ink properly may result in poor wash fastness, inferior adhesion and unacceptable durability. Ink gel and cure temperatures should be measured using a Thermoprobe placed directly in the wet ink film and verified on the production run substrate(s) and production equipment. It is the responsibility of the printer to determine that the correct ink has been selected for a specific substrate and the application processes meet your customer's standards or specifications.
- ▶ Brittle inks should not be used as an adhesive base.
- ▶ High density applications may require more heat for complete cure and acceptable cracking effects.
- ▶ Stir plastisols before printing.
- ▶ Do not dry clean, bleach or iron printed area.
- ▶ **NON-CONTAMINATION OF EPIC INKS:** Do not add or mix non-Epic inks, additives or extenders with Epic inks. All buckets, palette knives, stirring apparatus, squeegees, flood bars and screens must be cleaned properly and free of phthalates and pvc containing inks. Non-phthalate emulsions and pallet adhesives must be used. Failure to follow these precautions may cause phthalate contamination in violation of consumer protection laws and regulations.
- ▶ Any application not referred in this product information bulletin should be pre-tested or consultation sought with Wilflex Technical Services Department prior to printing.
- ▶ Email: techserviceswilflex@polyone.com



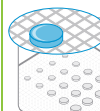
Fabric Types
100% cotton, cotton blends, some synthetics



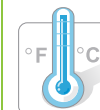
Mesh
Counts: 86-230 t/in (34-91 t/cm)
Tension: 25-35 n/cm²



Squeegee
Durometer: 60-70, 60/90/60
Edge: Square, Sharp
Stroke: Medium-Fast
**Do not use excess squeegee pressure.*



Non-Phthalate Stencil
Direct: 2 over 2
Capillary/Thick Film: up to 200 microns
Off Contact: 1/16" (.2cm)



Flash & Cure Temperatures
Flash: 220°F (105°C)
Cure: 340-350°F (170-175°C)



Pigment Loading
EQ: 5% max
MX: N/A
PC: 5% max
**All percentages listed at % by weight.*



Epic Additives
Extender: N/A
Reducer: Epic Viscosity Buster-1% max
**All percentages listed at % by weight.*



Storage
65-90°F (18-32°C)
Avoid direct sunlight.
Use within one year of receipt.



Clean Up
Ink degradent or press wash.



Health & Safety
MSDS: www.polyone.com or
Contact your local CSR.