

- 99900PFX Epic Phosphorescent
- 61220PC Excite Yellow PC
- 99950PFX Epic Kosmic Glo
- 61223PC Kosmic Glo Powder
- 99951PFX Epic Intense Kosmic Glo

Wilflex™ Glo/Phosphorescent inks are specially formulated non-phthalate inks producing high intensity, phosphorescent, glow-in-the-dark effects. Kosmic Glo inks provide high intensity and maintain a long duration. Phosphorescent inks provide high intensity for a shorter duration. The inks can be used as stand-alone inks, straight out of the container or integrated with other inks to create a super “glow” effect.

### Highlights

- ▶ Use as a highlight in the graphic image.
- ▶ Can be used to produce high intensity phosphorescent glow effects with long lasting afterglow.
- ▶ Excellent wash properties.
- ▶ Glow duration and intensity are listed from longest/brightest to shortest/lightest: 99951PFX Epic Intense Kosmic Glo, 61223PC Kosmic Glo Powder, 99950PFX Epic Kosmic Glo, 61220PC Excite Yellow Powder, 99900PFX Epic Phosphorescent.

### Printing Tips

- ▶ Best “glow” results when printed directly onto light colored fabric.
- ▶ Use light colored ink underlay if printing onto dark fabric grounds.
- ▶ Use consistent, high-tensioned screen mesh to optimize performance properties.
- ▶ Recommended mixing instructions: Add 61223PC Kosmic Glo Powder or 61220PC Excite Yellow powders at 10% max by weight to a clear, unfilled base such as 10008PFX Epic Special Effects Clear. Add Epic PCs, Epic EQs or Epic MX to create custom color with Kosmic finished inks. Additions of pigments or finished ink to the Kosmic base should not exceed 5% by weight.

### Compliance

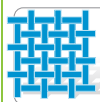
- ▶ Non-phthalate.
- ▶ For individual compliance certifications, please visit [www.wilflex.com/compliance](http://www.wilflex.com/compliance).

### Precautions

- ▶ Perform fusion tests before production. Failure to cure ink properly may result in poor wash fastness, inferior adhesion and unacceptable durability. Ink gel and cure temperatures should be measured using a Thermoprobe placed directly in the wet ink film and verified on the production run substrate(s) and production equipment. It is the responsibility of the printer to determine that the correct ink has been selected for a specific substrate and the application processes meet your customer’s standards or specifications.
- ▶ Glow response will be impaired if more than the recommended color is added to the Kosmic Glo Base.
- ▶ Pretest all fabrics for dye migration.
- ▶ Stir plastisols before printing.
- ▶ Do not dry clean, bleach or iron printed area.
- ▶ **NON-CONTAMINATION OF EPIC INKS:** Do not add or mix non-Epic inks, additives or extenders with Epic inks. All buckets, palette knives, stirring apparatus, squeegees, flood bars and screens must be cleaned properly and free of phthalates and pvc containing inks. Non-phthalate emulsions and pallet adhesives must be used. Failure to follow these precautions may cause phthalate contamination in violation of consumer protection laws and regulations.
- ▶ Any application not referred in this product information bulletin should be pre-tested or consultation sought with Wilflex Technical Services Department prior to printing.
- ▶ Email: [techserviceswilflex@polyone.com](mailto:techserviceswilflex@polyone.com)



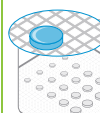
**Fabric Types**  
100% cotton, cotton blends, some synthetics



**Mesh**  
Counts: 61-140 t/in (24-55 t/cm)  
Tension: 25-35 n/cm<sup>2</sup>



**Squeegee**  
Durometer: 60-70, 70/90/70  
Edge: Sharp  
Stroke: Medium  
*\*Do not use excess squeegee pressure.*



**Non-Phthalate Stencil**  
Direct: 2 over 2  
Capillary/Thick Film: 200-400 microns  
Off Contact: 1/16” (.2cm)



**Flash & Cure Temperatures**  
Flash: 160°F (70°C)  
Cure: 320°F (160°C) For Ink Products.



**Pigment Loading**  
EQ: 5% max  
MX: 5% max  
PC: 5% max  
*\*All percentages listed at % by weight.*



**Epic Additives**  
Extender: N/A  
Reducer: N/A  
*\*All percentages listed at % by weight.*



**Storage**  
65-90°F (18-32°C)  
Avoid direct sunlight.  
Use within one year of receipt.



**Clean Up**  
Ink degradent or press wash.



**Health & Safety**  
MSDS: [www.polyone.com](http://www.polyone.com) or  
Contact your local CSR.